

HIGH TEMPERATURE DRYERS

MCT / MCF SERIES

Dryer with air-cooled
aftercooler

PT. BERKAT PRIMATECH ABADI
JL. DARMO BARU TIMUR 2 NO 4
SURABAYA - INDONESIA
PHONE : 031 - 7321693 / 031 - 83021777
FAX : 031 - 7349867
EMAIL : primatech_me@yahoo.co.id



DRYER WITH AIR-COOLED AFTERCOOLER

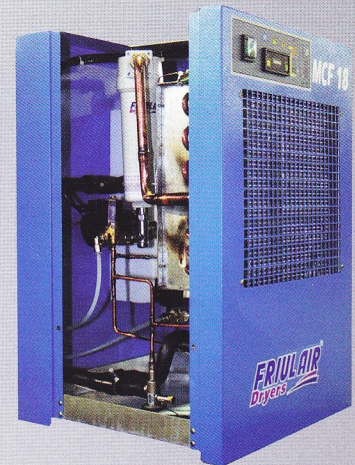
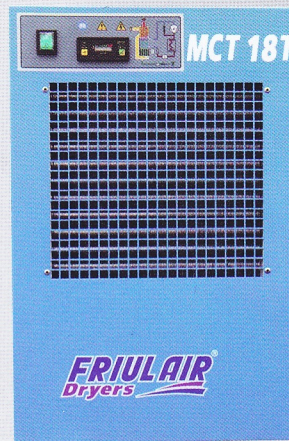
Compact unit. Accepts hot air, up to 80° c.

ALUMINIUM TECHNOLOGIES DIRECT TO ENERGY SAVING

FRIULAIR has increased its range of compressed air dryers with the introduction of the new MCT range (Masterpiece Cooling Technologies). This high efficiently cooling module has a direct effect on reducing energy consumption and pressure drop. The main advantages are :

- Low pressure drop even with load variances;
- Constant pressure DewPoint with differing load conditions.

The MCT 8 to 18 are available as MCF models which have an additional build in 5 micron-pre filter in the air inlet circuit



TECHNICAL FEATURES OF THE DRYERS MCT / MCF 8 - 80

Data refer to the following nominal condition :

- Ambient temperature of 35°C, with inlet air at 7 barg and 80°C
- Pressure DewPoint 5°C (-22°C atmospheric pressure DewPoint)
- Max. working condition : Ambient temperature 45°C, Inlet air temperature 80°C and Inlet air pressure 14 barg.

MODEL	REFRIG.	FLOW-RATE			DIMENSION	CONNECT	POWER SUPPLY
	[type]	[Nm ³ /h]	[l/min]	[cf/min]	AxBxG [mm]	[Ø]	[Ph/Volt/Fr]
MCT 8 T	R134.a	48	800	28	425x415x650	G 1/2" BSP - F	1/230-240/50
MCT 12 T	R134.a	72	1,200	42	425x415x650	G 1/2" BSP - F	1/230-240/50
MCT 18 T	R134.a	108	1,800	64	425x415x650	G 1/2" BSP - F	1/230-240/50
MCT 23 T	R134.a	138	2,300	81	485x455x1230	G 1" BSP - F	1/230-240/50
MCT 34 T	R134.a	204	3,400	120	485x455x1230	G 1" BSP - F	1/230-240/50
MCT 44 T	R404A	264	4,400	155	485x455x1230	G 1 1/4" BSP - F	1/230-240/50
MCT 69 T	R404A	414	6,900	244	555x580x1290	G 1 1/2" BSP - F	1/230-240/50
MCT 80 T	R404A	480	8,000	282	555x580x1290	G 1 1/2" BSP - F	1/230-240/50

Correction factor for ambient temperature changes (Air Cooled) :

Ambient Temperature °C	32	35	38	40	45
Factor	1.04	1	0.95	0.92	0.82

Correction factor for dew point changes :

Dew point °C	5	7	10
Factor	1	1.1	1.15

FRIULAIR
Dryers

PT. BERKAT PRIMATECH ABADI
JL. DARMO BARU TIMUR 2 NO 4
SURABAYA - INDONESIA
PHONE : 031 - 7321693 / 031 - 83021777
Fax : 031 - 7349867
EMAIL : primatech_me@yahoo.co.id



ASME Sect. VIII, Div. 1
Since 1998



NATIONAL BOARD
Since 1998



TOCT P
Since 2001



ISO 9001

Since 2001



PED

Since 2002